

# PS 300 CA-C

**Fully automatic eco single-chamber-PowerSpray®** 2Step compact cleaning system for products up to 780 x 950 mm, 31" x 37,5". Cleans stencils and possible Misprints from SMD-paste, dust, grease and oils.

**Part No. 0905300-PS-CA-C**

## Compact stencil cleaning



### The situation

Best possible cleaning of screens / stencils (in electronics and solar cell production) and possible misprints today is the prerequisite for a reproducible quality in production as well as the reduction of expensive production stand-stills. The trend is the installation of highly automated, quick and cost-saving yet efficient and reliable processes that ensure high customer satisfaction. The development of kolb PS300 CA takes this into consideration for small quantities. The use of almost odourless solvent-free\* waterbased detergents ensuring a highest possible cleaning efficiency today guarantees a secure and widest possible process window. The PS300 CA is ideally applicable for mass production plants with high capacity compressed air infrastructure where a cleaning system is placed to each printer.

### The advantages of PS300 CA:

- 2-tank system with communicating detergent tank.
- Suitable for cleaning products up to 780 x 950 (31" x 37,5").
- Fully automatic looped 2Step process with cleaning and drying.
- PS-PowerSpray with magnetic coupled pumping unit
- Drying with compressed air.
- Comfortable single push button operation.
- Process cycle times and maintenance intervals PLC controlled.
- Permanent fine filtration system.
- Closed loop. No water connection, no waste water disposal necessary.
- No explosion protection necessary, use next to the production line is possible.
- Front cover in stainless steel, side and rear covers in painted steel.
- Process sections made of electrolysis-resistant material.
- Recommended for use with pH-neutral TS-RS cleaning detergents.
- Interlockable space-saving hinged door with window into the process chamber.
- Noise level approx. 75 dB(A).
- Extremely compact: Small footprint - Euro pallet size (= < 1m<sup>2</sup>), height only 160 cms.

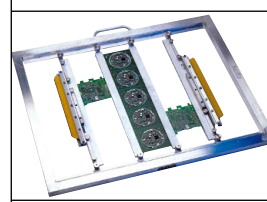
**The system has to be operated with a rinsing suitable (RS-) cleaning detergent.**



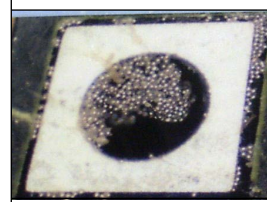
VectorGuard



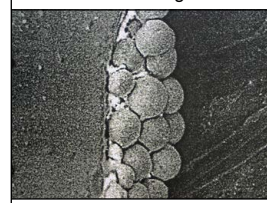
Stencil



LF-Carrier



Soldering residues



Soldering residues

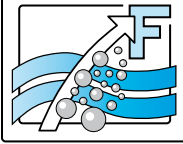
**Applications**

**Contaminations**

**Kolb Cleaning Technology GmbH**  
Karl-Arnold-Str. 12 · D - 47877 Willich  
Further information: [www.kolb-ct.com](http://www.kolb-ct.com)

Tel. +49 (0) 2154 9479 - 38  
Fax +49 (0) 2154 9479 - 47  
e-mail [info@kolb-ct.com](mailto:info@kolb-ct.com)

\*Solvent = organic hydrocarbon, under normal conditions volatile, flammable and risk of explosion.



## PS300 CA compact cleaning system

Hinged door



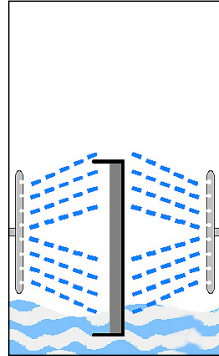
Loading



Operator desktop



Function



Maintenance



### Function

The PS300 CA will be loaded by placing stencils directly into the process chamber where protective round bars on either side in front of the spray rotors prevent damages to the stencils in case of handling errors. After loading, the door will be closed manually and will be locked automatically after the START of the cleaning operation. The fully automatic 2Step cleaning process via the spray rotors will run down in the pre-selected cycle time:

- Step 1 Cleaning
- Step 2 Drying with compressed air

PS300 CA allows the installation close to the production area and and it is thus another vital element in the value-added chain.

**Attention: Cleaning only with TS/RS-waterbased pH-neutral cleaning detergents qualified by the system manufacturer.**

### Programming / control

PS300 CA will be controlled by a PLC. The cycle time of the respective 2Step cleaning process is programmable in the PLC.

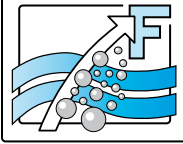
### Service and maintenance

Special care was taken to ensure an easy maintenance in the shortest possible time. The tank level is easily controllable transparent inspection opening in the front of the system. Filling of the tank will be through the opened chamber door directly into the process chamber and from there into the tank underneath. In the maintenance and service area at the right-hand side of the system there is the fine filtration unit inline and the integrated pump-out unit. A manometer shows the filter pressure.

For cleaning requirements with higher contamination respectively with more than 5-10 cleaning cycles per day the use of systems with separate detergent and rinse water / detergent filtration (in contrast to the systems with one communicating detergent) is more economical. Taking into consideration a higher detergent consumption, the quality of cleaning and the life span, the kolb PS300 VL or PS07 ST might be even more applicable solutions in such cases.

**Kolb Cleaning Technology GmbH**  
Karl-Arnold-Str. 12 · D - 47877 Willich  
Further information: [www.kolb-ct.com](http://www.kolb-ct.com)

Tel. +49 (0) 2154 9479 - 38  
Fax +49 (0) 2154 9479 - 47  
e-mail [info@kolb-ct.com](mailto:info@kolb-ct.com)



# PS300 CA compact cleaning system

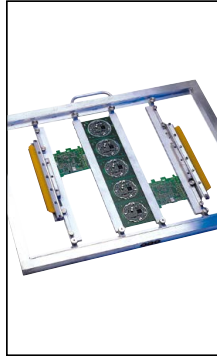
**Exhaust**



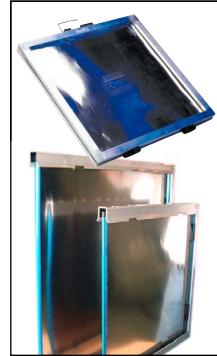
**Reservoir**



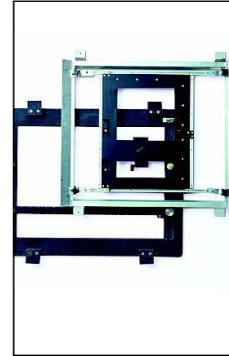
**LF-carrier**



**Stencils**



**Solder carriers**



**Options / accessories for PS300 CA:**

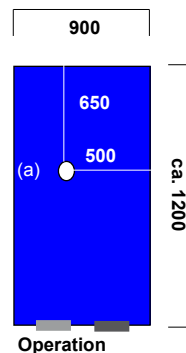
- Exhaust control with motor driven tight-closing flap valve to reduce to high extraction / too high consumption.
- Reservoir.
- Insulation for noise reduction.
- Carriers: various sizes and configurations as per customers` requirements.

**Technical data:**

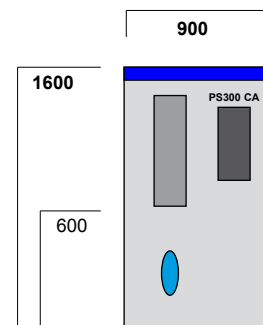
Power supply	:	standard 400 V, 16 A, CEE plug, L1, L2, L3, N, PE/ 50 or 60 Hz
Power consumption	:	approx. 1 kW
Compressed air	:	7-8 bar, approx.. 1000 - 1200l / min. - only when drying
Programming and control	:	PLC Siemens Logo
Ambient temperature (min/max)	:	min. 20° C / max. 50°C
Noise	:	ca. 75 dB (A)
Weight	:	ca. 300 kgs
Contents of the tank system	:	75 liters TS/RS-pH-neutral cleaning detergent
Option exhaust	:	connection w. capacity of approx. 200-300 m³/h necessary
Permanent filtration system	:	10 µm

**Foot print and max. space required for service and maintenance (in mms)**

**Top view:**  
Max. space required  
(a) = Exhaust (160 mm)



**Front view:**  
Max. space required



**Certifications:**

This system in its basic version was certified for the standard integration of comprehensive safety features.

